

NO.	Description	Qty.	Remark	NO.	Description	Qty.	Remark	NO.	Description	Qty.	Remark
1	Genset unit	23		14	DO delivery pump	2		27	Water treatment tank	1	
2	HFO feeding unit	6		15	DO daily service tank	1		28	Radiator	23	
3	Start air unit	6		16	DO feeding pump	2		29	Nozzle cooling water feeding pump	2	
4	BSDG	1		17	LO unloading pump	2		30	Leakage fuel oil tank	1	
5	HFO unloading pump	2		18	LO storage tank	1		31	Fuel draining pump	2	
6	HFO storage tank	2		19	LO supply pump	2		32	Exhaust boiler	6	
7	HFO delivery pump	2		20	Water storage tank	1		33	Oil fired boiler	1	
8	HFO settling tank	2		21	Sludge pool	1		34	Air inlet silencer	23	
9	HFO separate unit	1		22	Sludge delivery pump	2		35	LV distribution unit	1	
10	HFO daily service tank	1		23	Sludge separate unit	1		36	MV distribution unit	1	
11	HFO feeding pump	2		24	Water treatment unit	1		37	Step-up transformer	1	
12	DO unloading pump	2		25	Sludge tank	1		38	Central control room		
13	DO storage tank	1		26	Sludge draining pump	2					

Notes:  
The power plant layout can be changed in accordance with detailed design.

Preliminary

Leda Greenpower (Beijing) Trading & Engineering Co. Ltd		Indonesia 30MW HFO Container Type Power Plant	
批准 APPROVED	审核 REVIEWED	设计 DESIGNED	日期 DATE
日期 DATE	比例 SCALE	图号 FIG. NO.	版本号 VERSION
2013.11.12	1:100	ZGPT-30MW-00	0001

A

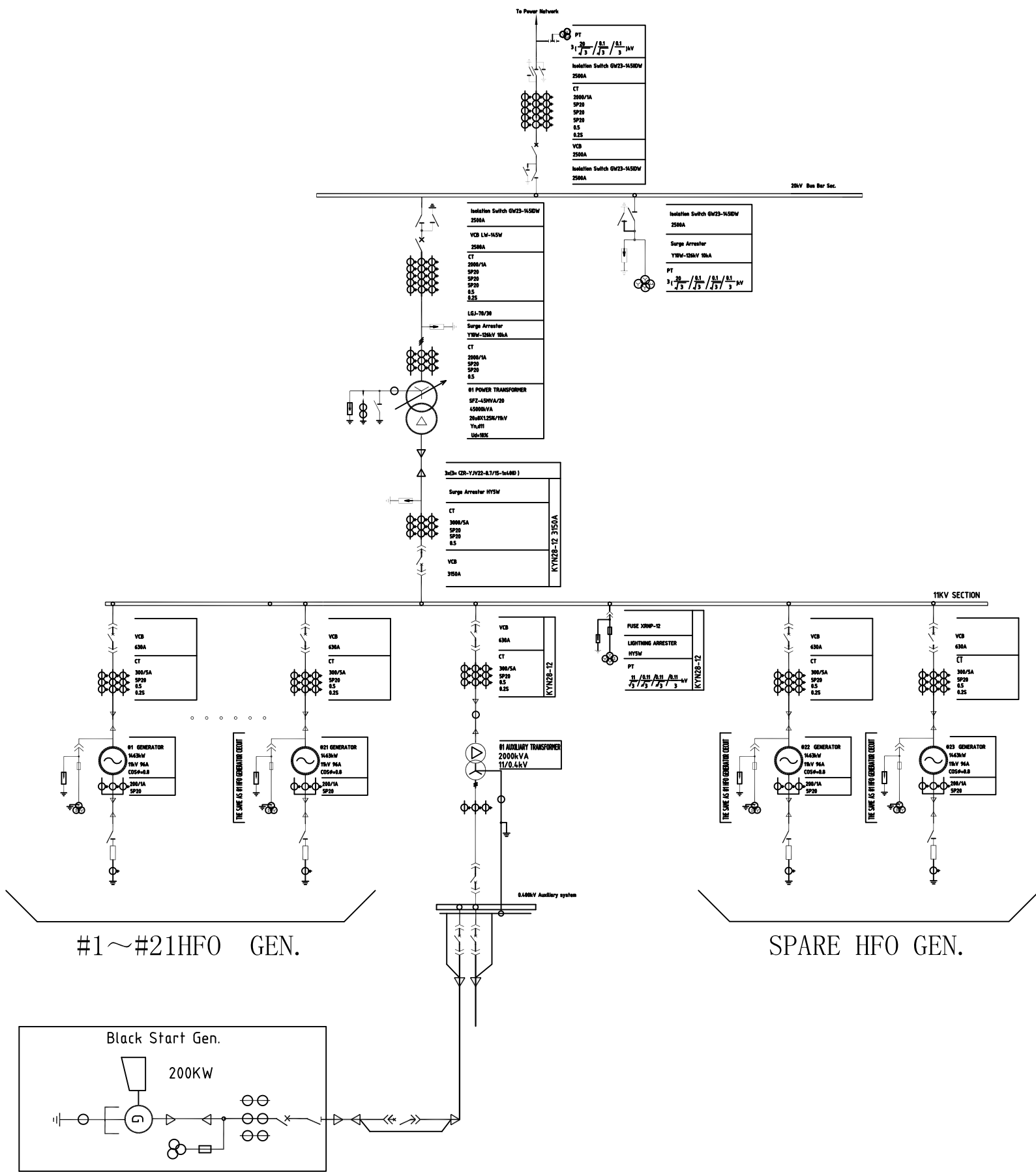
A

B

B

C

C



Preliminary

D

D

Leda Greenpower (Beijing) Trading & Engineering Co. Ltd			30MW HFO Container Type Power Plant		工程 PROJECT	设计阶段 DESIGN STAGE
批准 APPROVED		审核 REVIEWED		Electric System Layout		
校核 CHECKED		设计 DESIGNED				
日期 DATE	2013. 11.12	比例 SCALE	1:1	图号 DWG NO	ZGPT-30MW-03	版本号 VERSION NO.